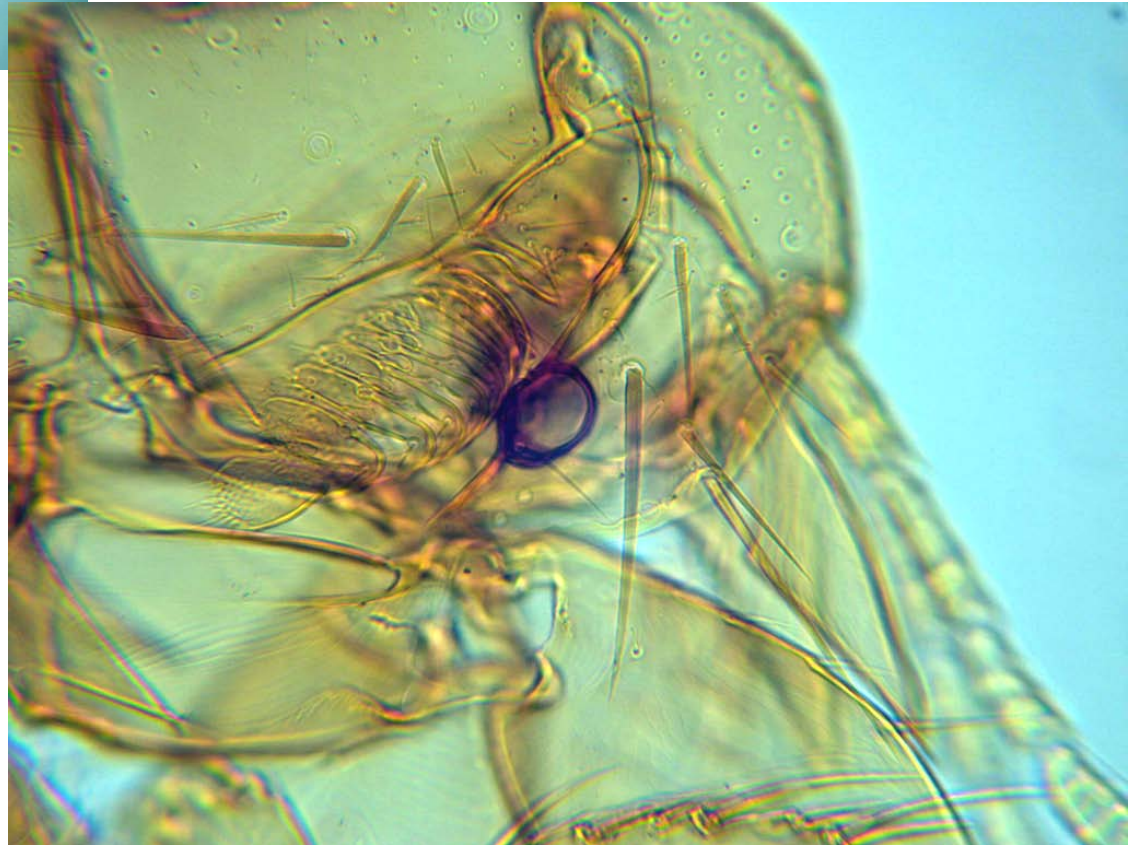


Orchopeas wickhami male (left) and female (right). Photographed at same stereoscopic magnification and transferred to this slide without alteration so relative sizes are representative.





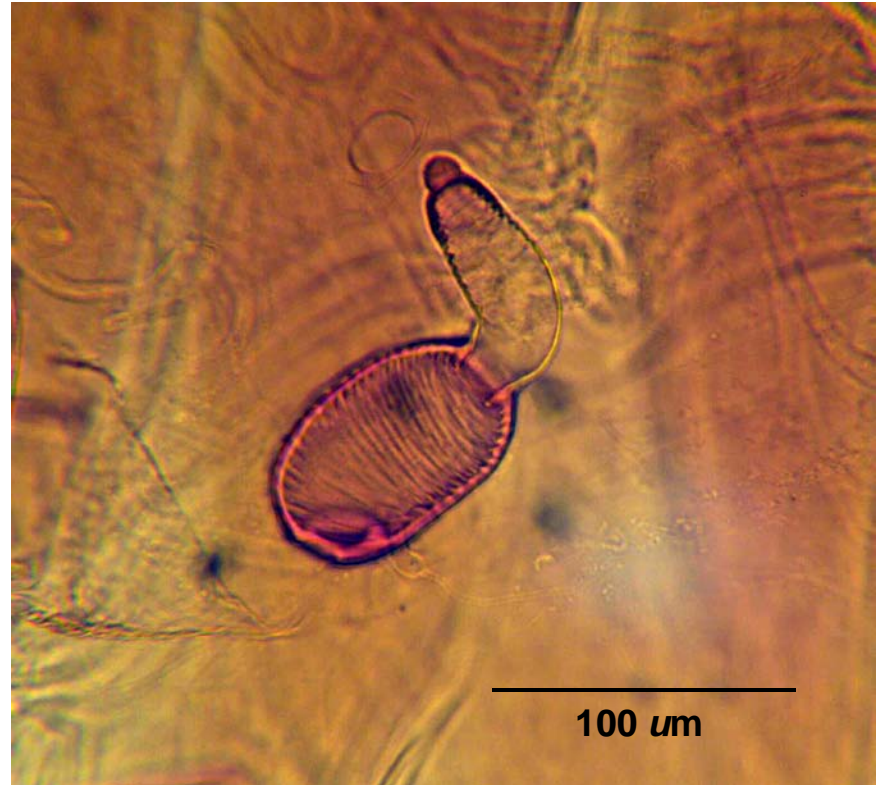
Orchopeas leucopus, male.
Head with prominent eye;
lacking genal ctenidium.
Pronotal ctenidium present.



Orchopeas leucopus, male genitalia. Note 4 prominent black pointed “spiniform” bristles on “finger” of clasper.



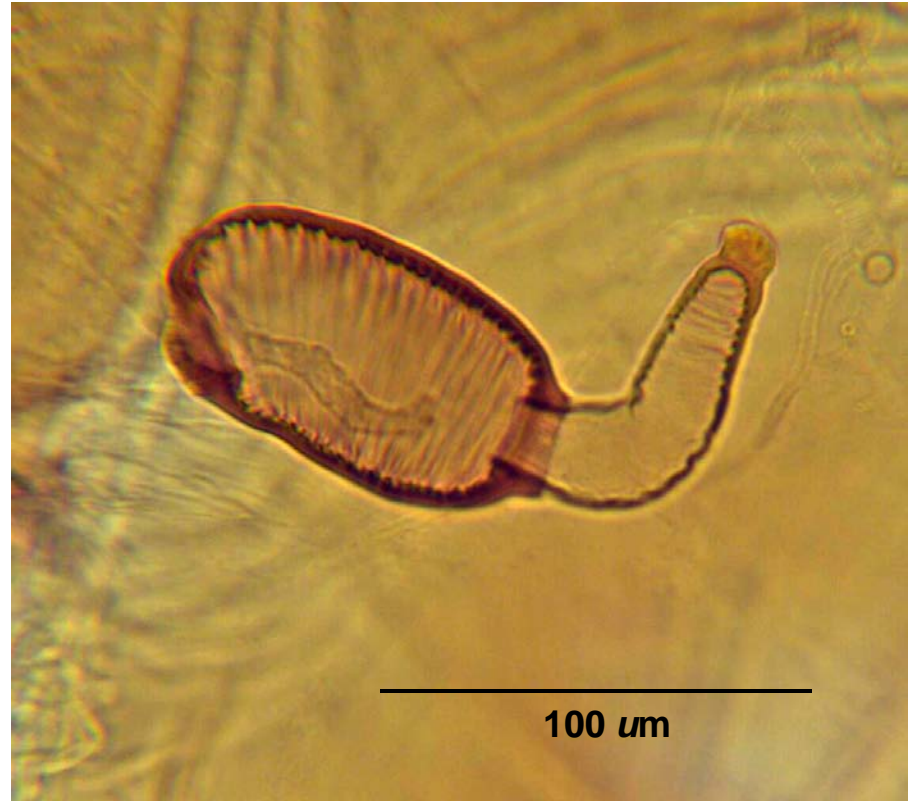
Orchopeas wickhami (= *O. howardi*) female posterior (left)
spermatheca (enlarged, right).



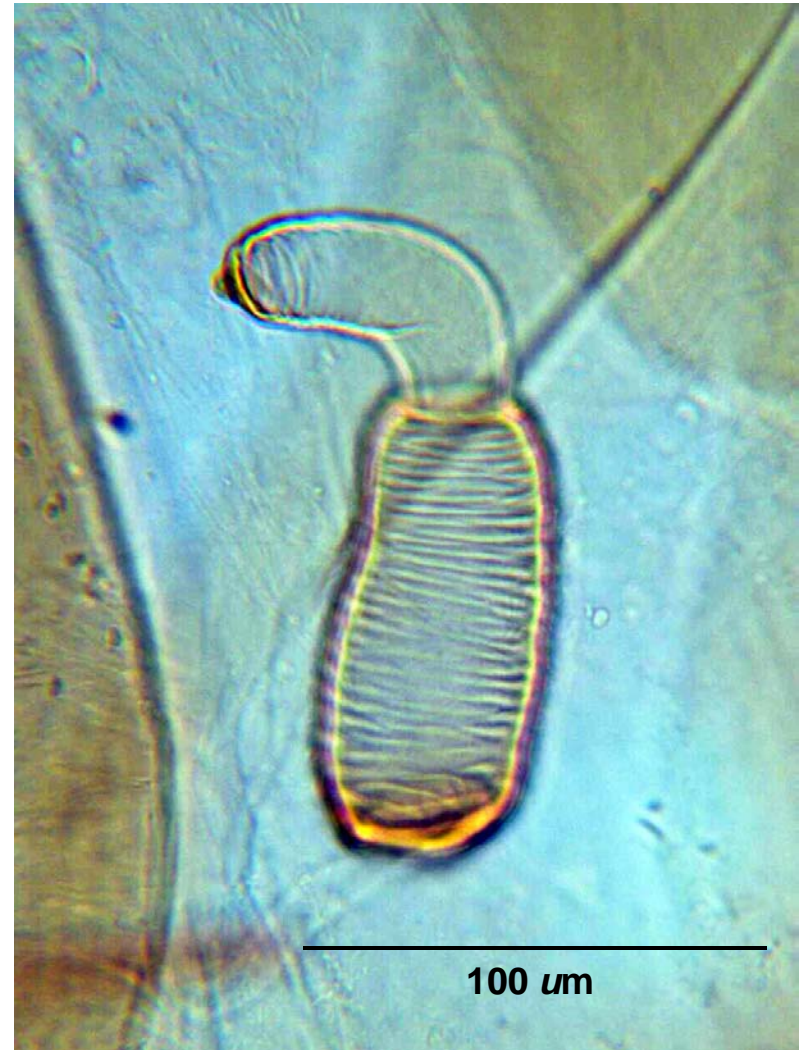
O. wickhami male posterior showing genitalia (left); enlarged (right).
Note 4 prominent black pointed “spiniform” bristles on “finger” of clasper; lower lobe of IX st. with 1 black spiniform (arrow).



O. wickhami spermatheca (2 depth of field views).



Orchopeas sexdentatus pennsylvanicus female posterior (left); spermatheca (right).



O. wickhami female head and mouthparts. Legend: e, epipharynx; md, serrated mandibles; mp, maxillary palp.

